



CORPORATE PROFILE



Model Infra Corporation Pvt. Ltd.

Model Infra Corporation Pvt Ltd.



MODEL INFRA CORPORATION PVT. LTD.

Reg. Off: No 6, SMK Chambers, 2nd floor
1st 'A' main road, Sector A, Yelahanka New Town,
Bangalore - 560064.
Ph: +91 080 43340300

www.modelinfra.com



Model Infra Corporation Pvt. Ltd.

CONTENTS

1. **Who we are**
2. Who we work with
3. What we do
4. Products Profile
5. Awards & Certifications





AN INTRODUCTION TO MIC

- ❖ **Over 22 Years of serving the biggest names in Construction Equipment, Mining, Energy, Agriculture, Exports, Defense, Railways and others.**
- ❖ **8 Strategically located Manufacturing plants in India.**
- ❖ **75,000+ MT per annum of Fabrication capacity.**
- ❖ **1,500+ Trained associates including certified Welders, Production, Design & Development, Quality, HR and Procurement Professionals.**
- ❖ **Professional Board and Management Team comprised of experienced Operational & Investor members.**
- ❖ **Proven track record of on time Delivery & Quality among all clients.**



MANUFACTURING FACILITIES



Bangalore
12,500 MTPA



Goa
12,500 MTPA



Dharwad – Unit 1
5,000 MTPA



Dharwad – Unit 2
7,000 MTPA



Pune - Chakan
10,000 MTPA



Pune - Alandi
10,000 MTPA



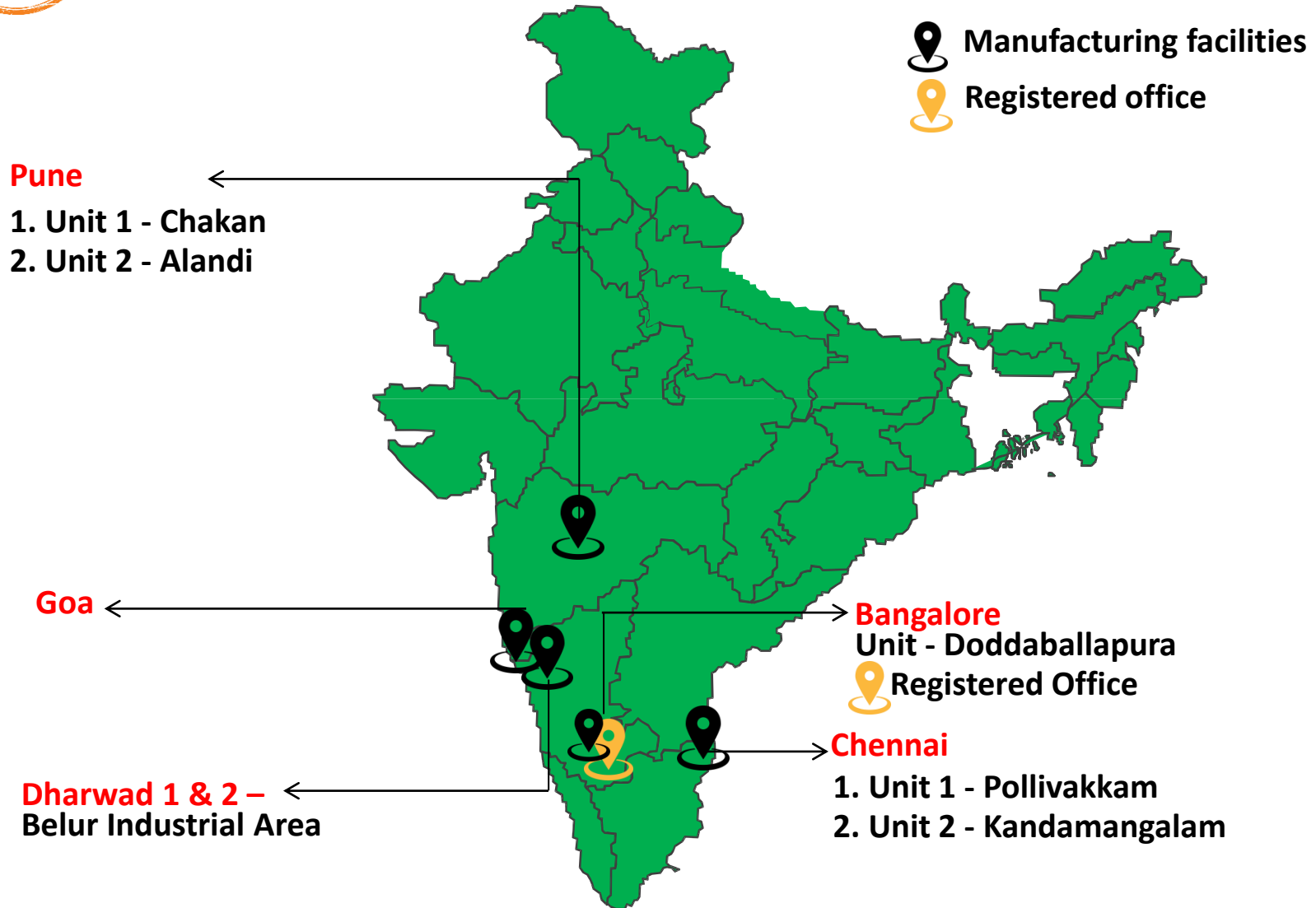
**Chennai -
Pollivakkam**
12,500 MTPA



**Chennai –
Kandamangalam**
10,000 MTPA



**THROUGH OUR MANUFACTURING FACILITIES LOCATED AT STRATEGIC LOCATIONS,
WE ADD VALUE TO OUR CLIENTS.**





EXECUTIVE MANAGEMENT TEAM

<p>Mr. K.P. Shivaprakash Managing Director & CEO</p>	<p>Mr. K.P. Shivaprakash is a Mechanical Engineer with over 20 years of relevant experience. Prior to Joining MIC he had held Senior position as Director Operations for 10 years and had worked with Tier 1 suppliers of most of major OEMs in India in Auto, Construction and Agriculture space.</p>
<p>Mr. Mahendranath Reddy CFO and Director</p>	<p>Mr. Mahendranath Reddy is a CA and with over 25 years of experience in Finance, Accounts, Audit and Taxations . Prior to joining MIC he has worked at senior positions in companies such as BPL Ltd, Sindhu Cargo Service, Bharat Tissus etc. His areas of expertise include Banking, Finance and accounts, Fund raising and Company law compliance.</p>
<p>Mr. Ganesh Ishwar Director - Operations & Exports (Goa & Dharwad)</p>	<p>Mr. Ishwar is a graduate Engineer and MBA, he has been with MIC since its inception as a key founding member. Presently he is holding the key position of Director (Operations & Exports) and has exposure to strategic customer origination, business ramp up production engineering, new projects and planning.</p>
<p>Mr. Robert Monis Director & Corporate Head - HR</p>	<p>Mr. Robert Monis is graduated in law and completed his Post Graduate degree in Human Resources. He has over 2 decades of experience in spans Law, Human Resources, Industrial Relations, Strategic Management and Corporate Affairs. Before joining MIC he held senior managerial positions at companies such as Forbes Gokak (a TATA group company), HFM Hammerle Astria, Oswal group and Fouress Engineering India Pvt Ltd.</p>
<p>Mr. K Achuthan Sr. Vice President - Operations (Bangalore)</p>	<p>Mr. Achuthan has 24+ years of rich and relevant experience in the domain areas of Quality Assurance & Compliance, Product & process Development and Manufacturing. He has worked with companies like Simpson, Usha Telehoist, Ajax- Fiori , Leeboy India & Surin Automotive in various capacities before MIC.</p>
<p>Mr. Sanjay Patil Director – Operations (Pune)</p>	<p>Mr. Sanjay Patil has about 18+ years of rich and relevant experience in the domain areas of Operations, product Development, Costing, projects & Marketing. He had worked with world class companies like Fleet Guard (Cummins group), Warade Group & Surin Automotive in various capacities before MIC.</p>
<p>Mr. Y. Kiran Prasad Rao Vice President - Operations (Chennai)</p>	<p>Mr. Y. Kiran Prasad Rao has 22+ years of rich and relevant experience in the domain areas of Operations, Product development, Costing, Quality Assurance & Compliance. Prior to joining MIC, he has been associated with Mando Brakes, Breaks India, Ashok Leyland, MKB Cast, Lear Corporation, Johnson Controls, Suzlon Energy Etc. in various positions.</p>



Model Infra Corporation Pvt. Ltd.

CONTENTS

1. Who we are
2. Who we work with
3. What we do
4. Products Profile
5. Awards & Certifications





VARIOUS SECTORS SERVED BY MIC

Construction & Mining Equip.



Renewable Energy



Railways



Defense



Agriculture



Material Handling



Exports





OUR ESTEEMED CLIENTS



TATA HITACHI

Reliable solutions





Model Infra Corporation Pvt. Ltd.

CONTENTS

1. Who we are
2. Who we work with
3. **What we do**
4. Products Profile
5. Awards & Certifications





OUR CAPABILITIES

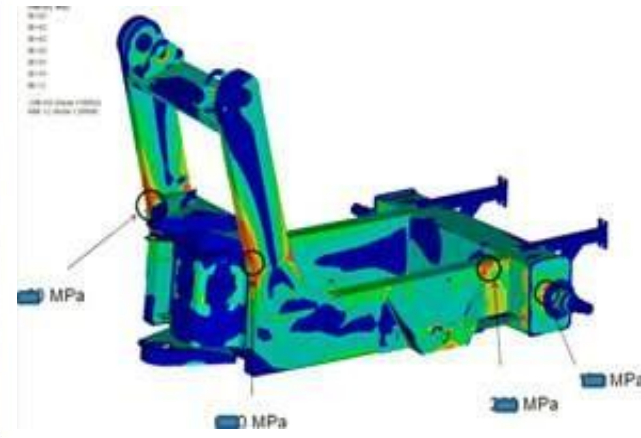
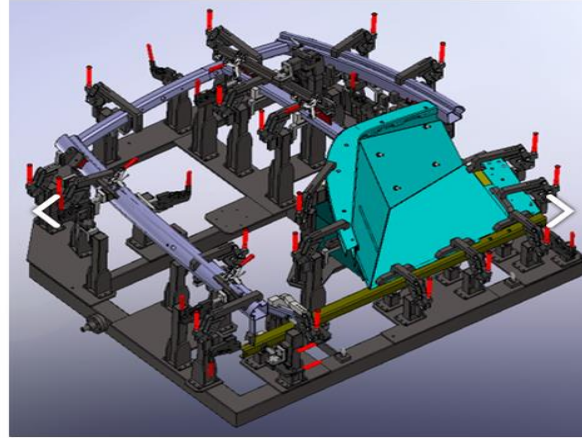
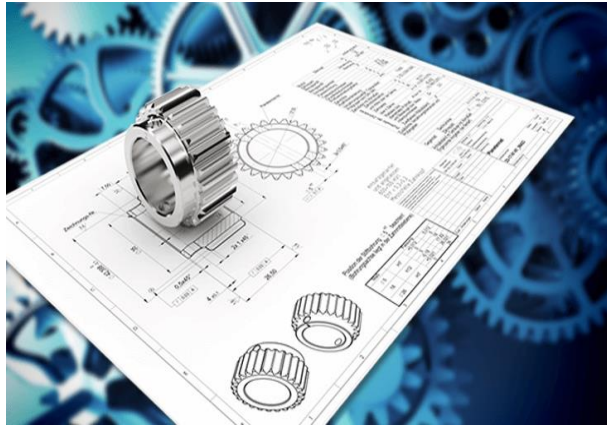
Design & Engineering

First Operations

Welding

Machining

Finishing



Design Engineering

MIC's design engineers enable us to assist customers in the design and development of new products, optimization of clients designs, Assist with customization of products for domestic market.

Production Engineering

Our production engineers enable us to develop fixtures and tools, optimize production process and minimize wastage. We have resources Specialized in Nesting, SPC, SQC, Lean, KAIZEN etc.,

Design & PD - IT Resources

MIC has resources and capability in efficient utilization of following Software / Packages:

- CREO parametric
- SOLID WORKS
 - ANSYS
 - ZW CAD
- SIGMA NEST



OUR CAPABILITIES

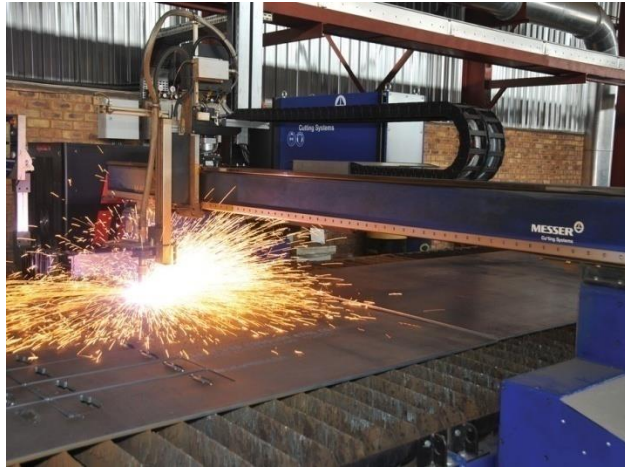
Design & Engineering

First Operations

Welding

Machining

Finishing



Plasma and Oxy Acetylene CNC Cutting Machines

Make: Messer

Numbers: 10

Length: 16000mm

Width: 6500mm

Total Capacity: 75000+ tons / month

Laser Cutting Machines

Make: Messer, Trumpf
(Omini Mat Fiber - 2000w)

Numbers: 3

Length: 12000mm

Width: 4000mm

Working Range: 3000 x 10000mm

Robotic Beveling Machine

Make: IGM Austria

Numbers: 1

Number of Axes: 6

Working Radius: 3000mm

Angle of Rotation: 270°



OUR CAPABILITIES

Design & Engineering

First Operations

Welding

Machining

Finishing



CNC Press Brake

Make: YEWAI,
Hindustan Hydraulics

Numbers: 6

Capacity: 450MT to 650MT

Stroke Length: 320mm to 400mm

Max Length / Thick : 6.5Mtr / 16mm

CNC Rolling Machines

Make: DAVI Italy

Numbers: 5

Max Rolling Thickness: 19mm for
3,000mm

With Cone rolling attachment

RM Shot blasting

Make: Indabator

Numbers: 1

Feed Rate: 1 m/min

Eff. Blasting Size:
8,000mm X 2550mm X 100mm



OUR CAPABILITIES

Design & Engineering

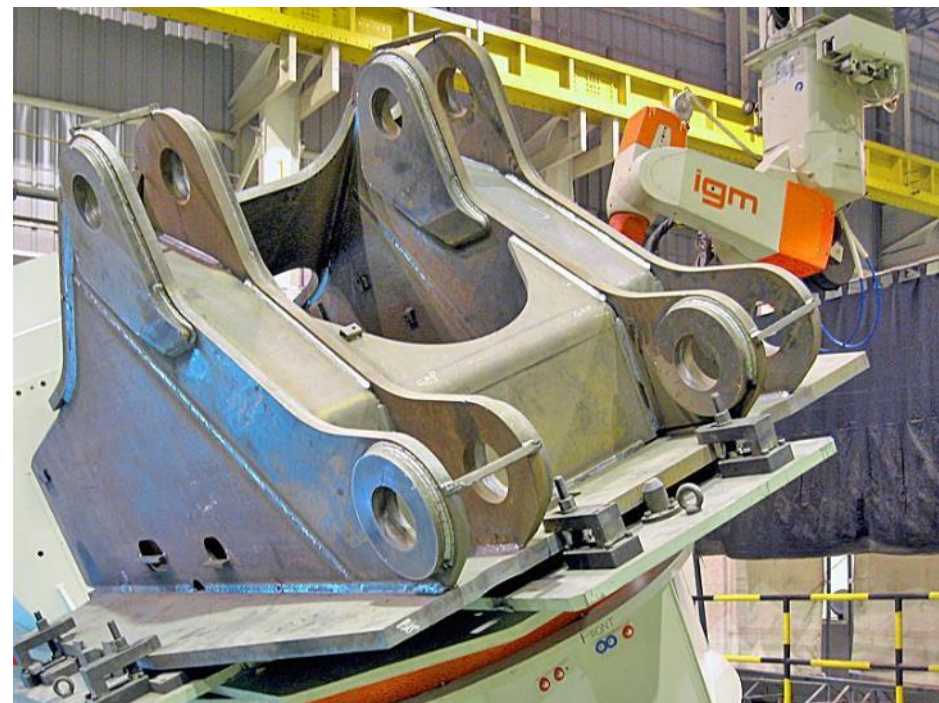
First Operations

Welding

Machining

Finishing

IGM - Robotic Welding Machines





OUR CAPABILITIES

Design & Engineering

First Operations

Welding

Machining

Finishing

IGM - Robotic Welding & Komatsu Uranami Welding Machine (UT Joint)





OUR CAPABILITIES

Design & Engineering

First Operations

Welding

Machining

Finishing

Sub Merged Arc Welding Machines



400 & 600 Amps MIG / MAG Welding Machines





OUR CAPABILITIES

Design & Engineering

First Operations

Welding

Machining

Finishing

Welding positioners for all types of Structures





OUR CAPABILITIES

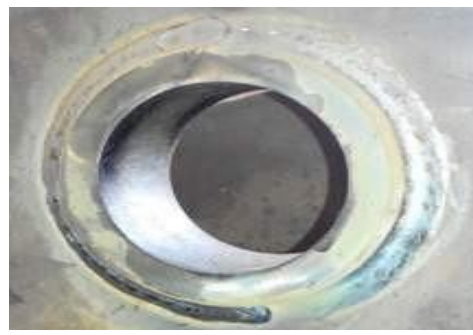
Design & Engineering

First Operations

Welding

Machining

Finishing





OUR CAPABILITIES

Design & Engineering

First Operations

Welding

Machining

Finishing

Welding Certifications:

- ISO 3834-2 : 2021
(Welding Quality Management System)
- EN 15085-2

International Certified Welding Personnel at all Plants:

- International Welding Specialists (IWS)
- International Welding Engineers (IWE)
- ISO 9712 - ASNT / NDT Level – II & Level – III Engineers.





OUR CAPABILITIES

Design & Engineering

First Operations

Welding

Machining

Finishing

Non Destructive Tests being carried out at In-house by Certified Level II Engineers

Ultrasonic Testing - UT



Magnetic Particle Testing - MPT



Liquid Penetrant Testing



Metallurgical Microscope



Hardness & Macro testing Lab



Pressure Leak Test





OUR CAPABILITIES



Welder Training School



Consumable Samples



Welding Defects



Welding Positions





OUR CAPABILITIES

Design & Engineering

First Operations

Welding

Machining

Finishing

COUNTER WEIGHT FILLING



Counterweights are integral part of a variety of big machines dealing with huge load. By balancing the weight, they secure a safety performance of Excavators, Tractors, Forklift trucks, Cranes and others. The manufacturers prefer using either full cast iron, full concrete, or a mix of ore, concrete and metal bits.



OUR CAPABILITIES

Design & Engineering

First Operations

Welding

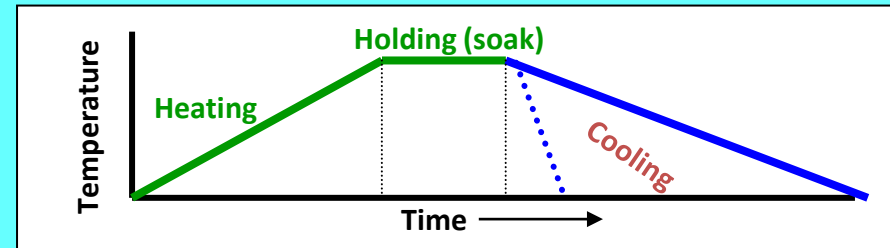
Machining

Finishing

STRESS RELIEVING

Typical Heat Treating Cycle

- Heating to the Control Temperature
- Holding at Temperature (Soak)
- Cooling (Rapid or at Slow / Controlled Rate)



- ❖ Job Maximum Size:- 12X3.5X2.5 Mtr. <LXWXH>.
- ❖ Bogie Capacity:- 20 Ton.
- ❖ Operating Temperature:- 640°C.
- ❖ Type of Furnace:- Diesel Fire.
- ❖ No. Of Thermocouples:- 18 No's.
- ❖ Type of burner:- 8 No's High velocity Dual fuel burner.
- ❖ Heat cycle chart:- 18 points recorder with print out option.
- ❖ Process Control:- Fully Automatic.
- ❖ Temperature Control Concept:- The furnace temperature control concept is effected by means of a fully automatic control system through the 4 zones.





OUR CAPABILITIES

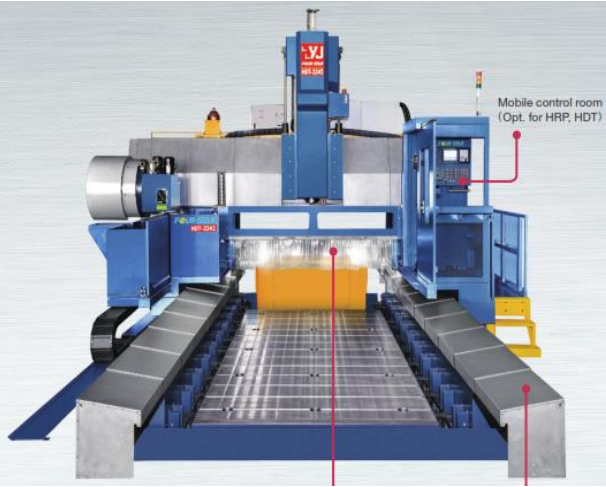
Design & Engineering

First Operations

Welding

Machining

Finishing



Medium Travelling Double Column Machining Center

Make : Four star , Taiwan

Machine Accuracy: 20Microns/1Mtr

X Axis Travel: 7000mm

Y Axis Travel: 2750mm

Z Axis Travel: 1500mm

ATC 24 Tools pallet

Auto Five Face head

Fixed Double Column Machining Center

Make : Four star , Taiwan

Machine Accuracy: 20Microns/1Mtr

X Axis Travel: 5000mm

Y Axis Travel: 3300mm

Z Axis Travel: 1500mm

ATC 32 Tools pallet

Spindle Power: 26/26 kW

Vertical Machining Center

Make : Four star , Taiwan

Machine Accuracy: 15Microns/ Full Travel

X Axis Travel: 3200mm

Y Axis Travel: 2100mm

Z Axis Travel: 650/1500mm

ATC 32 Tools Vertical arm type

Auto 90 degree head.



OUR CAPABILITIES

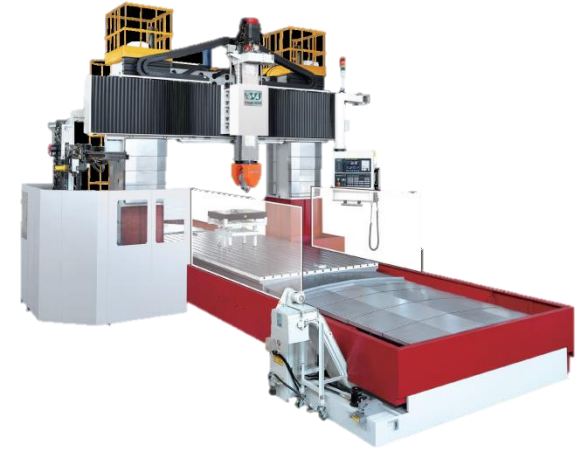
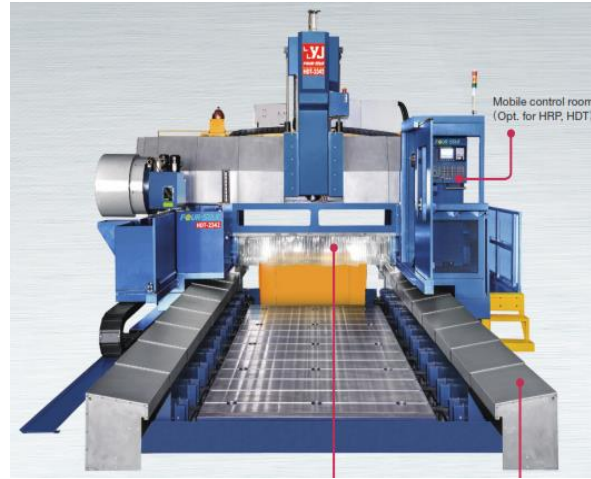
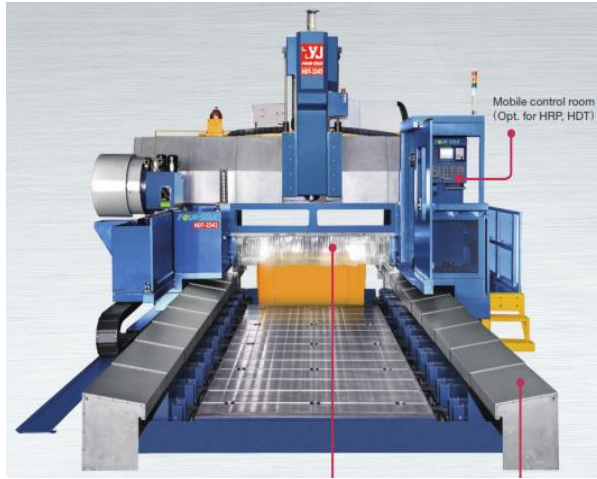
Design & Engineering

First Operations

Welding

Machining

Finishing



Double Column Machining Centre (HDT 2470 + 5F)

Make : Four star , Taiwan

Machine Accuracy: 20Microns/1Mtr

X Axis Travel: 7000mm

Y Axis Travel: 2400+650mm

Z Axis Travel: 1500mm

ATC 24 Tools pallet

Auto Five Face head

Double Column Machining Centre (HDT 2490 + 5F)

Make : Four star , Taiwan

Machine Accuracy: 20Microns/1Mtr

X Axis Travel: 9000mm

Y Axis Travel: 2400+650mm

Z Axis Travel: 1500mm

ATC 24 Tools pallet

Auto Five Face head

Double Column Machining Centre (FD 3660 + 5F)

Make : Four star , Taiwan

Machine Accuracy: 20Microns/1Mtr

X Axis Travel: 6000mm

Y Axis Travel: 3600+650mm

Z Axis Travel: 1400mm

ATC 32 Tools pallet

Auto Five Face head



OUR CAPABILITIES

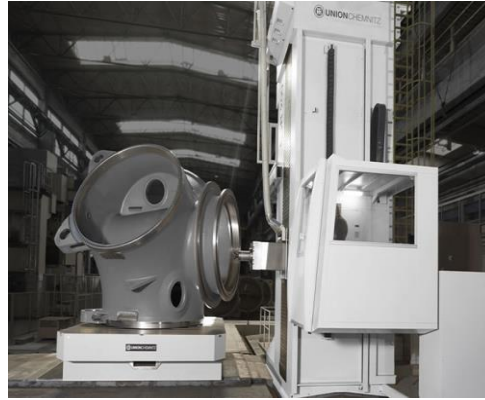
Design & Engineering

First Operations

Welding

Machining

Finishing



MDR-130 CNC Floor Boring machine

Make: Juaristi

Machine Accuracy:
20Microns/1Mtr

X Axis Travel: 6600 mm

Y Axis Travel : 2200 mm

Z Axis Travel : 1200 mm

W Axis Travel: 400 mm

Spindle Diameter: 130mm

Table Carrying Load : 20000 Kgs

CNC Horizontal Boring Machines

Make : Union BFT 130
(Heidenhain Controller)

Machine Accuracy:
20Microns/1Mtr

X Axis Travel: 2200mm

Y Axis Travel: 1700mm

Z Axis Travel: 2400mm

W Axis Travel: 770mm

Spindle Diameter: 130mm

Table Carrying Load : 10000 Kgs

CNC Juaristi TS-150 Boring Mill

Make: Juaristi

Machine Accuracy:
20Microns/1Mtr

X Axis Travel: 4000 mm

Y Axis Travel : 3000 mm

Z Axis Travel : 1000 mm

W Axis Travel: 2000 mm

Spindle Diameter: 130mm

Table Carrying Load : 20000 Kgs

Horizontal Boring Machine

Make: Fermat

Machine Accuracy:
20Microns/1Mtr

X Axis Travel: 4000 mm

Y Axis Travel: 2000 mm

Z Axis Travel: 1600 mm

W Axis Spindle Travel: 730 mm

Spindle Diameter: 130mm

Table Carrying Load : 10000 Kgs



OUR CAPABILITIES

Design & Engineering

First Operations

Welding

Machining

Finishing



TOOL PRESETTER & MEASURING MACHINE

Make : ZOLER

Model: SMILE420X-00317

Maximum Tool Length Z = 600mm (23.62")

Maximum Tool Diameter D = 420mm (16.54")

Snap Gauge d = 100mm (3.94")

High Precision Spindle ISO 50
Concentricity 0.002mm (0.000079")
4 X 90 Deg Spindle Indexing
Integrated Calibration Spheres



OUR CAPABILITIES

Design & Engineering

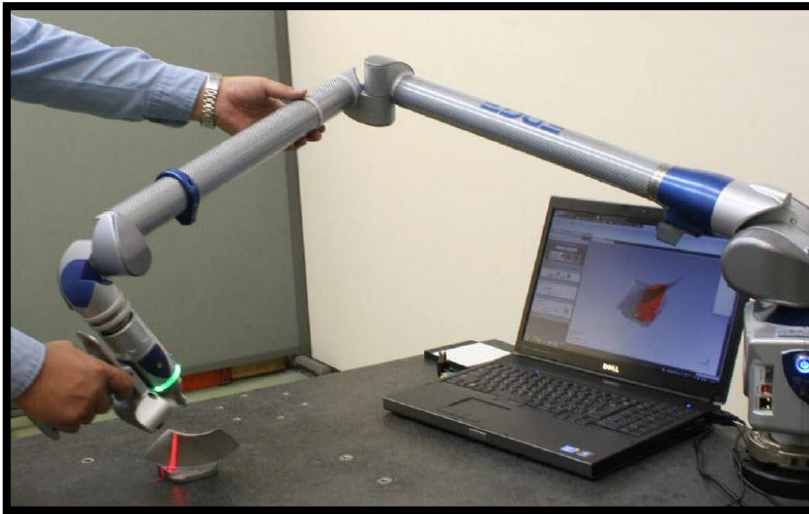
First Operations

Welding

Machining

Finishing

COORDINATE MEASURING MACHINE



Coordinate Measuring Machine

Make : FARO Portable CMM Quantum E

Size : 3.5mtr 7 Axis with arm

Probe size : 3mm & 6mm.

Software : CAM2 2019 Probing Edition



OUR CAPABILITIES

Design & Engineering

First Operations

Welding

Machining

Finishing



Shot Blasting Rooms for Welded Assemblies

Make : Mec Shot

Eff. Blasting Length : 6 Mtrs to 9 Mtrs

Eff. Blasting Width : 4 Mtrs

Eff. Blasting Height : 4 Mtrs



Paint Booth & Oven

Type : Dry / Wet Type

Length : 6 Mtrs to 9 Mtrs

Width : 4 Mtrs

Height : 4 Mtrs

Note: Available at all plants



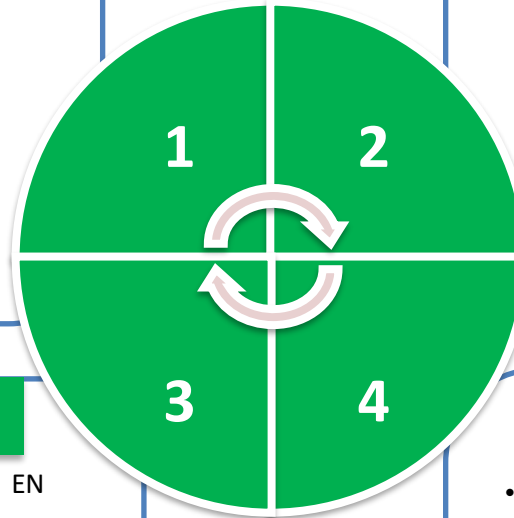
KEY ENABLERS FOR OUR CAPABILITIES

People

- 1500+ people across MIC plants - including design professionals; design, production and quality engineers and welding professionals qualified as per international standards like ASME Sec IX and DIN 278
- Ongoing training for all our workers in Arc Welding, MIG welding, Dressing Fabricated Components, Fundamentals of Engineering Drawing etc.
- Motivated and experienced employees the average tenure of workers at MIC is 8 years

Processes

- MIC is an ISO 9001:2015, ISO 3834-2-2021, EN 15085-2, ISO 14001 certified company
- ESG disclosure & rating is under progress
- We have robust processes, controls and reporting in place that enable us to operate at optimal efficiency levels and minimize wastage
- We have a strong network of sub-contractors, machinists, yards and warehouses that enables us to quickly ramp up when required by customers



Procurement

- MIC is one of the largest consumers of steel in its business space
- Owing to our annual order quantities, both domestic and imported steel suppliers store inventory for us, ensuring uninterrupted supply
- Our relationships with large mills enable us to obtain steel rolled as per our order, ensuring consistent quality

Partnership

- From being a dedicated supplier to Telcon when we first set up in Dharwad, we have evolved into a trusted partner to several of the reputed names in the industry
- We have endeavoured to constantly enhance our capabilities through partnering with reputed names – our recent collaborations have included KOMATSU, JCB, TATA HITACHI, HYUNDAI, KOBELCO, SANY, VOLVO, PUTZMEISTER, LTCEL, WIRTGEN, ATLAS COPCO, SIEMENS GAMESA, GE, AJAX, TAFE, CNH, EPIROC, ALSTOM etc..



Model Infra Corporation Pvt. Ltd.

CONTENTS

1. Who we are
2. Who we work with
3. What we do
4. **Products Profile**
5. Awards & Certifications





PRODUCTS PROFILE

MIC has immense experience in manufacturing of variety of Buckets for Construction Equipment

MIC is the largest manufacturer of wide variety of buckets for excavators in India. Leading names in Construction Equipment including Komatsu, JCB, TATA Hitachi, Hyundai, Kobelco, Sany, Volvo, CNH etc. are among MIC's esteemed customers.

Different varieties of buckets manufactured by MIC

20 – 25 Tons class excavator
general purpose bucket



30 – 35 Tons class excavator
general purpose bucket



45 – 50 Tons class excavator
general purpose bucket



Heavy duty iron ore bucket



Granite bucket



Low profile bucket





PRODUCTS PROFILE

Different varieties of buckets and attachments manufactured by MIC

210 Class Ripper Bucket



380 Class Ripper Bucket



2.2 Cu M Ripper Bucket



12 & 20 Ton Tilt Bucket



24" Sheaves



4 Tine Hydraulic Grapple





PRODUCTS PROFILE

Different varieties of buckets and attachments manufactured by MIC

Clampshell Buckect



Quarry Bucket



2.65 Arm & Quarry Bucket



Tilt Bucket





PRODUCTS PROFILE

Excavator thumbs designed and manufactured by MIC

30 – 35 ton Machine EXCAVATOR THUMBS



Application : 1



Application : 2





PRODUCTS PROFILE

MIC manufactures many critical assemblies for Mining and Construction Equipment such as Arms , Booms and other complex body structures like Track Frames, Revolving Frames, Chassis, Platforms etc.,

Booms



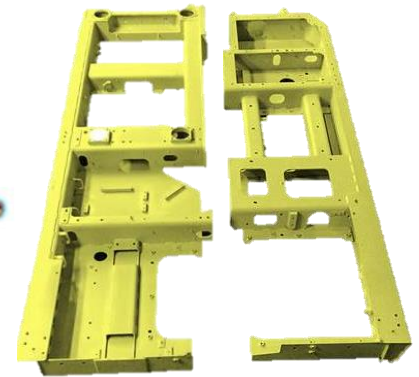
Arms



Center Frames



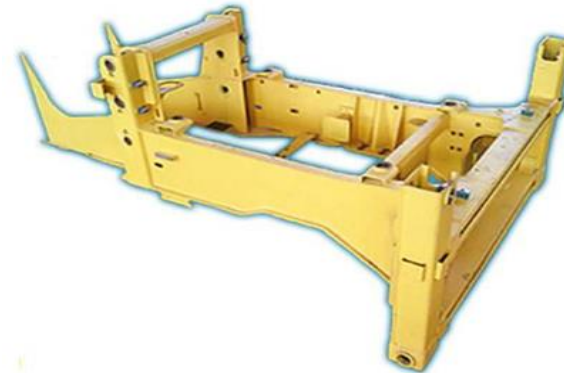
LH & RH Platforms



Track Frames



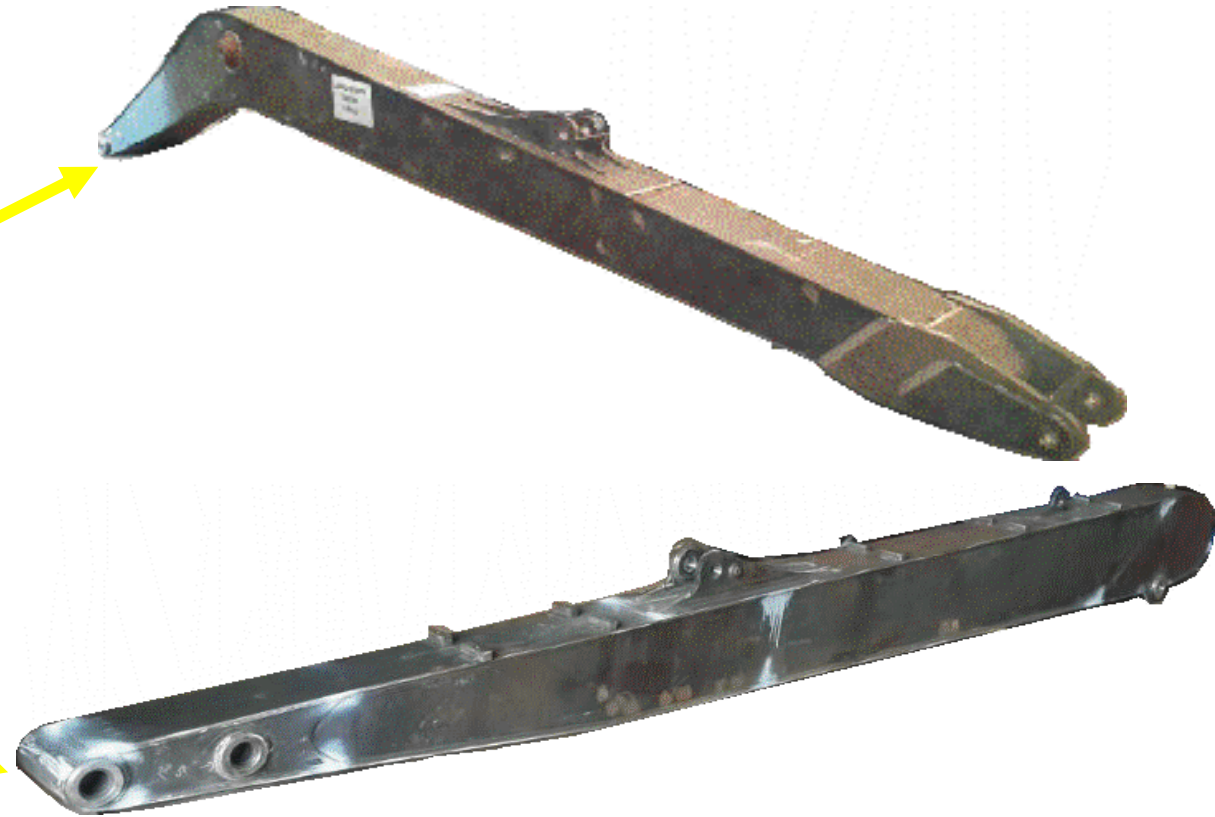
Chassis





PRODUCTS PROFILE

Long Reach Arm & Boom





PRODUCTS PROFILE

Products for Road Industry & Crushers.

Chassis for crushers



Chassis for Pavers



Frames for Compactors





PRODUCTS PROFILE

Mobile Crusher Chassis



Impact Crushers





PRODUCTS PROFILE

Chassis and Hoppers for Concrete Mixers

Chassis



Hopper

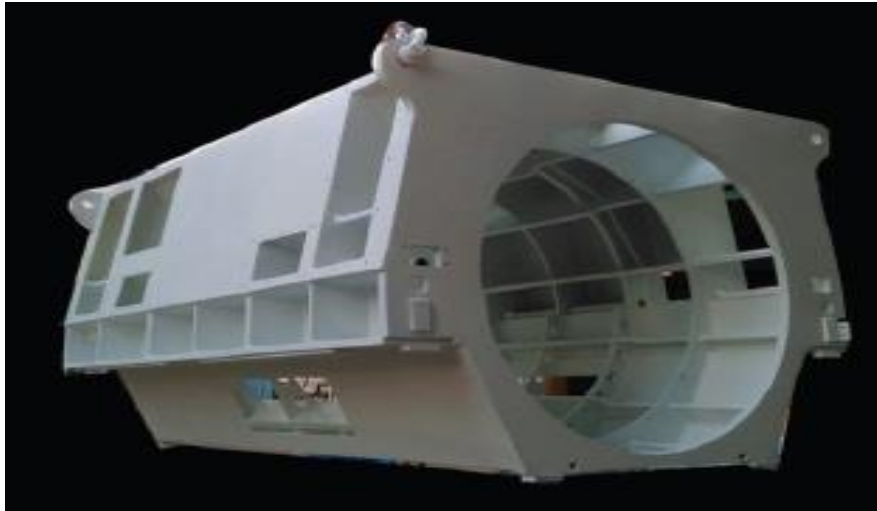




PRODUCTS PROFILE

Products for Conventional and Renewable Energy Sectors.

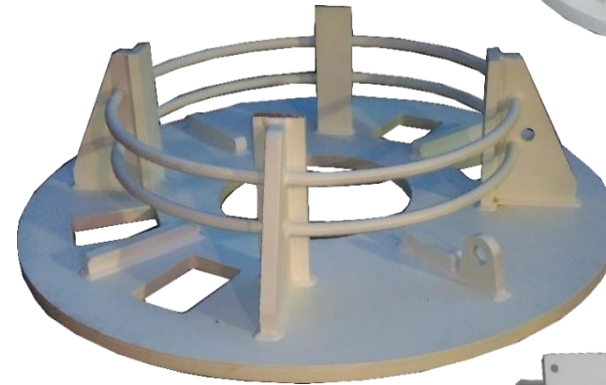
Stator Frames for AC Generators



Bell Housing



End Shields



Frames for Wind Mills



Terminal Boxes





PRODUCTS PROFILE

Products for Railways

ICF, BEML, SAN LOCO, INDIAN RAILWAYS

Bogie Frame



Head Stock



Bogie Bolster



Body Bolster





PRODUCTS PROFILE

Products for Railways

ALSTOM TRANSPORTATION: ASSEMBLIES & PARTS FOR E-LOCO & METRO RAIL (GLOBAL)

E-Loco



Metro Rail





PRODUCTS PROFILE

Parts for Agriculture Sector

Front Lift Arm



Draw Bar Assembly



Main frame for sowing equipment





PRODUCTS PROFILE

Parts for Agriculture Sector

Assembly Front Hitch



ROPS – Top Member Assembly



**ROPS – Assembly bottom frame
(LH & RH)**



**Drawbar Base
&
Link plate**



Front Hitch Assembly



Front Weight Frame



**Assembly Draw Bar
Bracket**



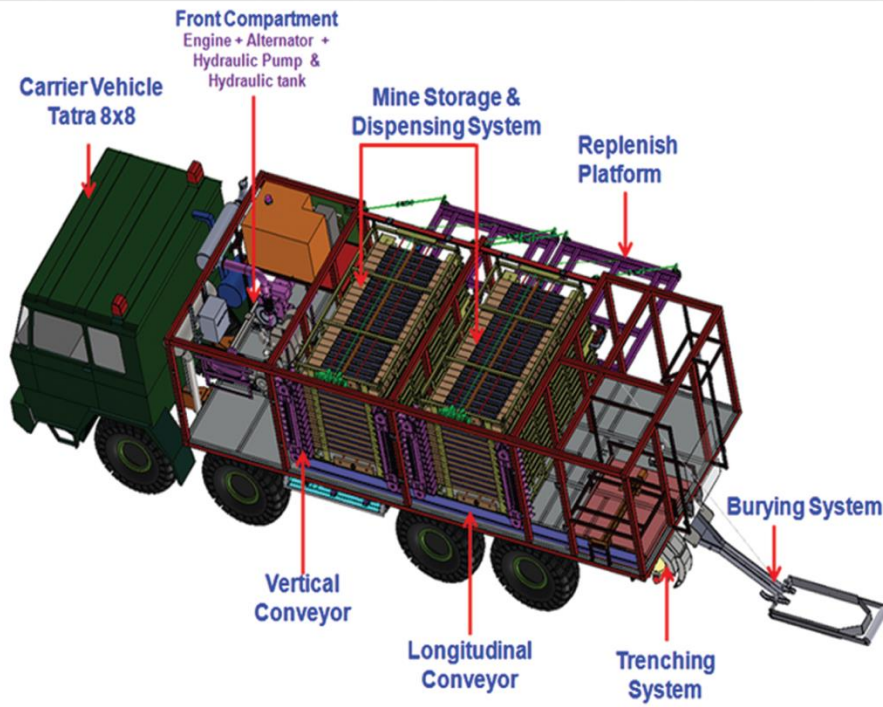


PRODUCTS PROFILE

Equipment assembled for defense sector

Illustration of Object Laying Machine assembled by MIC as per customer order

Fabricated components like, Under Frame, Rotating Base Body and Launch Beam Assembly for Rocket Launchers





PRODUCTS PROFILE

MIC has been a reliable partner for clients with time critical and custom fabrication needs across wide range of sectors and variety of structures (EPC Sector).

Custom Fabricated Structures from MIC

Platforms for Mining Equipment



Blender wheel Reclaimer



General structures



Cement plant silos





PRODUCTS PROFILE

MIC undertook the erection of a coke-oven plant in Goa for a client, as the principal partner in a partnership with VeCon of Germany (EPC)

Coke oven plant erection in Goa





Model Infra Corporation Pvt. Ltd.

CONTENTS

1. Who we are
2. What we do
3. Who we work with
4. Products Profile
5. **Awards & Certifications**





AWARDS AND CERTIFICATIONS



Awarded for **Best Delivery & Performance 2021-22**
Awarded for **5S 2020-2021**
Awarded for **Plant Manager Award 2020-2021**
Awarded for **Best Delivery & Performance 2017-18**
Received **Supplier First Place award from Komatsu for Welding**



Top Significant Contributions recognition for FY 2015-16
Over all Excellence Award from JCB in 2016-17
Best Supplier for Delivery, Production Ramp-ups, Quick Responsiveness in 2010



Award received for **Best Quality Performance for Q1 2019**



Best Supplier Award – Joint Business Development – IBU 2019



Award received for **Best Quality Performance 2018**



Award of Excellence for Sustained Performance in Quality 2016-17



Best Supplier award from L&T Komatsu in 2012 with a 95%+ delivery track record
In last 24 months with sustained quality
Significant Contributions recognition in 2011
Awarded for **Excellence in Supply Chain** in 2009



AWARDS AND CERTIFICATIONS



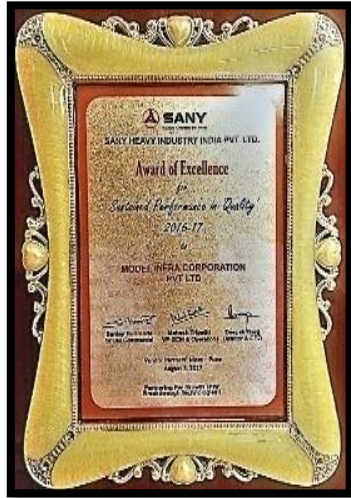


AWARDS AND CERTIFICATIONS





AWARDS AND CERTIFICATIONS





AWARDS AND CERTIFICATIONS





AWARDS AND CERTIFICATIONS





CONTACT US

MIC Units

Bangalore Plant

Model Infra Corporation Pvt. Ltd.,
104, Doddaballapur Industrial Area,
Majara Hosahalli Hobli, Doddaballapur,
Bangalore - 561 203
Karnataka

Ph: + 91 080 43340300, Mobile: +91 7259437245

Goa Plant

Model Infra Corporation Pvt. Ltd.,
L-13, Verna Industrial Estate,
Verna - 561 203,
Goa

Ph: + 91 832 669 0981-84, Mobile: +91 9975445679

Pune Alandi Plant

Model Infra Corporation Pvt. Ltd.,
Survey No.34, A/P Solu, Alandi,
Tal-Khed, Dist-Pune-410501
Maharashtra.
Mobile: + 91 7774039522

Pune Chakkan Plant

Model Infra Corporation Pvt. Ltd.,
lot No.10, Gate No.679/2, Balaji Industrial Area,
At/post-Kuruli Chakan, Tal-Khed, Dist-Pune-410501
Maharashtra.
Mobile: + 91 7774039522

Dharwad Plant 1

Model Infra Corporation Pvt. Ltd.,
221, KIADB Industrial Growth Center,
Belur, Dharwad - 580 011
Karnataka

Ph: + 91 836 248 6785, Mobile: + 91 9945671129

Dharwad Plant 2

Model Infra Corporation Pvt. Ltd.,
Plat No 225 & 226, Sy No 100, 102, 8, 113 and 147,
Belur Industrial Area, Mummigatti Hobli, Garag Taluk,
Dharwad-580011, Karnataka
Mobile: + 91 9975445679

Chennai Polivakkam Plant

Model Infra Corporation Pvt. Ltd.,
#104, Indo Space Logistics Park, Polivakkam Village,
Sriperambadur, Thiruvallur Main Road,
Thiruvallur District, Tamil Nadu - 602002
Mobile : +91 7259437245

Chennai Kandanangalam Plant

Model Infra Corporation Pvt. Ltd.,
Survey No 15/2B, At Kandanangalam, Sriperambadur
Taluk, Kancheepuram District - 602105
Tamilnadu
Mobile : +91 8939800485



CONTACT US

Registered Office

No 6, 2nd floor, SMK Chambers,
1st 'A' Main Road Sector A,
Yelahanka New Town
Bangalore 560 064
Karnataka
India.

Phone: +91 80 4334 0333

Mobile: +91 7259366972

E mail: info@modelinfra.com

Website: www.modelinfra.com

Disclaimer: This document is intended solely for informational purposes and may contain legally privileged and/or confidential information. Any unauthorized use or disclosure may be unlawful. All brand and product names and associated logos contained within this document belong to their respective owners and are protected by copyright. Under no circumstance may any of these be reproduced in any form without the prior written agreement of their owner. While every effort has been made to ensure accuracy, the information within this document is provided without warranty, and MIC shall not be liable for any errors contained herein, or damages of any type in connection with the use of this material



MODEL INFRA CORPORATION PVT. LTD

THANK YOU

